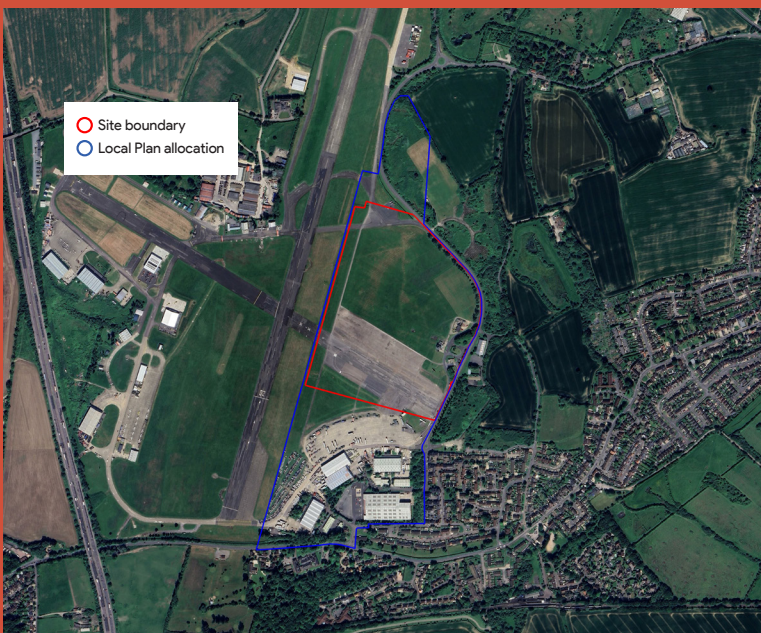


North Weald Data Centre

We are consulting on our early plans for North Weald Data Centre, a proposed new data centre at North Weald Airfield located in the heart of the Essex and Herts Digital Innovation Zone.

This newsletter sets out how you can get involved in the consultation, where you can find more information and how you can share your feedback.

This consultation is running from **Tuesday 9 July 2024**.



The recently adopted Epping Forest Local Plan (2021-2033) allocated around 40 hectares (ha) of land to the east of North Weald Airfield for employment uses. This includes the ambition to deliver high-skilled and digital, data-driven jobs on the Airfield.

The plan on this page shows the area of land (21ha) within the site allocation we are considering for North Weald Data Centre.

What is a data centre?

A data centre is a facility with lots of computers that store and process large amounts of information. Every Google search you do is processed by servers in Google data centres. Google data centres enable our users to run their activities on top of keeping all of Google's products and services up and running around the world.

For more information, check out our Discovering Data Centres series:
google.co.uk/about/datacenters/discover/



You can find out more about our proposals for North Weald Data Centre by:

Getting in touch with us by phoning 0800 038 3486, emailing information@northwealddatacentre.co.uk or writing (no stamp required) to:
North Weald Data Centre
FREEPOST SEC Newgate UK LOCAL

Visiting our project website:
www.northwealddatacentre.co.uk
where you can view and download our consultation materials.

You are invited to take part in our public exhibitions, which will take place at the following dates and times:

Friday 12 July

3pm-7pm

Thornwood Common Village Hall,
Thornwood, CM16 6NB

Saturday 13 July

11am-3pm

Bantham And Ongar Bowls Club,
Weald Bridge Road,
North Weald Bassett, CM16 6GP

You can share your views on North Weald Data Centre by:

Completing an online questionnaire at:
www.northwealddatacentre.co.uk

Submitting your comments or completed questionnaire by email to:
information@northwealddatacentre.co.uk

Posting this questionnaire or submitting your comments (no stamp required) to:
North Weald Data Centre
FREEPOST SEC Newgate UK LOCAL

To ensure we can take your feedback into account, please do share your comments with us by 15 August 2024.

Feedback from consultation will, along with ongoing environmental assessments and technical work, help us to refine our proposals before we submit a planning application to Epping Forest District Council.